

MINI-PRO

Warewash Mini Pump

The Mini-Pro Series is Knight's newest line of small and reliable dosing pumps with adjustable flow rates for single tank dish washers and glass washers. This compact, sleek peristaltic pump is designed to dispense liquid detergent or rinse aid. At its price, the Mini-Pro is the low-cost solution to your warewash dispensing needs.

"Cost Saver, Space Saver, Reliable"

Mini-Pro Analog

Mini-Pro Digital



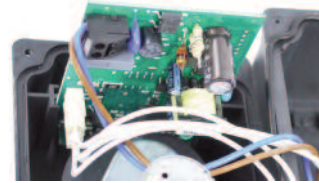
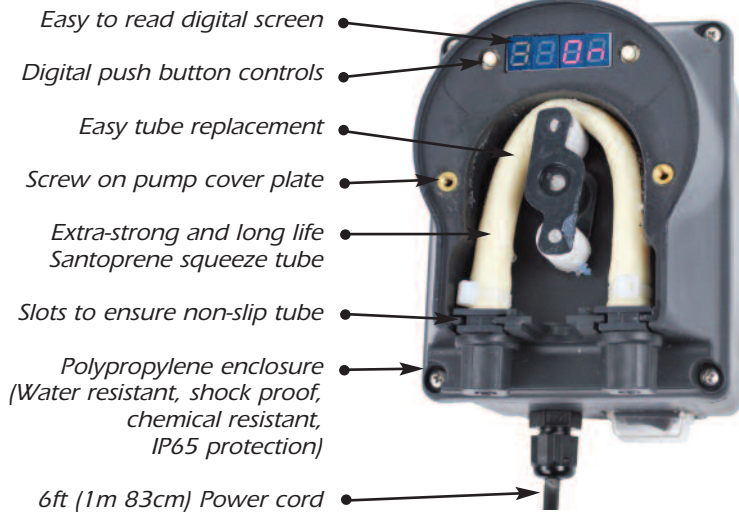
- Wide selection of models to fit your needs ranging from quick digital push button programming to analog simple potentiometer setup to conductivity controlled.
- Digital based control allows for fast no hassle installation and automated operation
- Attractive, space saving case is easily wall mounted
- Durable Polypropylene enclosure that is water resistant and chemical resistant
- Self priming, reliable peristaltic pump
- Quick disconnect for suction and discharge tube connections
- Digital Mini-Pro is password protected
- Adjustable flow rate and rinse limit

KNIGHT

IDEX
FLUID & METERING

KITCHEN SYSTEMS

Mini-Pro Features



Plugs on the circuit board provide for quick electrical connection



Power switch is protected by a flexible, water resistant seal



Quick disconnect for suction and discharge tube connections



Durable, long life motor

Product Specification

| | ADJUSTABLE MINI-PRO ANALOG | | MINI-PRO DIGITAL | |
|---------------------|--|-------------------------------------|--|-------------------------------------|
| | ANALOG DETERGENT | ANALOG RINSE | DIGITAL DETERGENT | DIGITAL RINSE |
| MODEL | KMP-AD | KMP-AR | KMP-DD | KMP-DR |
| FLOW RATE | .7 to 4.1 oz/min (21 to 121 ml/min) | .1 to .6 oz/min (4 to 18 ml/min) | .4 to 4.1 oz/min (.7 to 121 ml/min) | .1 to .6 oz/min (4 to 18 ml/min) |
| PRESSURE | 1.5 PSI (.1 bar) | 45 PSI (3 bar) | 1.5 PSI (.1 bar) | 45 PSI (3 bar) |
| POWER SUPPLY | 100-240 VAC 50/60 Hz | 100-240 VAC 50/60 Hz | 24-240 VAC 50/60Hz | 24-240 VAC 50/60Hz |

ORDERING INFORMATION

Mini-Pro

Note: All Mini-Pro pumps are supplied with injection connector, foot filter, suction and delivery tubes, bracket and wall mounting fixing screws.

Mini-Pro (20-240 VAC, 50/60 Hz)

| Model | Part Number | Description |
|--------|-------------|---|
| KMP-AD | 7865451-01 | Detergent Pump, Analog Potentiometer Setting, Low Flow, 24-240 VAC, (W 3.23" x H 4.05" x D 3.62") |
| KMP-AR | 7865452-01 | Rinse Pump, Analog Potentiometer Setting, Low Flow, 24-240 VAC, (W 3.23" x H 4.05" x D 3.62") |
| KMP-DD | 7865453-01 | Detergent Pump, Digital Push Button Setting, Low Flow, 100-240 VAC VAC, (W 3.23" x H 4.05" x D 3.62") |
| KMP-DR | 7865454-01 | Rinse Pump, Digital Push Button Setting, Low Flow, 100-240 VAC, (W 3.23" x H 4.05" x D 3.62") |

Mini-Pro (230 VAC, 3W)

| | | |
|--------|---------|--|
| KMP-AD | 7865451 | Detergent Pump, Analog Potentiometer Setting, Low Flow, 230 VAC, 3W, (W 3.23" x H 4.05" x D 3.62") |
| KMP-AR | 7865452 | Rinse Pump, Analog Potentiometer Setting, Low Flow, 230 VAC, 3W (W 3.23" x H 4.05" x D 3.62") |

Mini-Pro (90-265 VAC, 3W) models available, please request ordering information

KNIGHT LIMITED WARRANTY

Knights controls and pump systems are warranted against defects in material and workmanship for a period of ONE YEAR. All Electronic Control Boards have a TWO YEAR warranty. Warranty applies only to the replacement or repair of such parts when returned to the factory with a KRA number, freight prepaid and found to be defective upon factory inspection. Rubber and synthetic rubber parts such as "O" rings, diaphragms, squeeze tubing and gaskets are considered expendable and are not covered under warranty. Warranty does not cover liability resulting from performance of this equipment nor the labor to replace this equipment. Product abuse or misuse voids warranty. Knight products are not for use in potentially explosive environments. Any use of our equipment in such an environment is at the risk of the user. Knight does not accept any liability in such circumstances.

KNIGHT DISCLAIMER

The information and specifications included in this publication were in effect at the time of approval for printing. Knight, LLC. reserves the right, however, to discontinue or change specifications or design at any time without notice and without incurring any obligation whatsoever.

Knight Headquarters
Toll Free (800)854-3764
Tel (949) 595-4800
Fax (949)595-4801
www.knightequip.com

Knight Canada
Tel (905)542-2333
Fax (905)542-1536

Knight Europe
Tel +44(1323)514.855
Fax +44(1323)514.828

Knight Australia
Tel +61(02)4223.7450
Fax +61(02)4271.8136

Knight N. Asia
Tel +82(2)3481.6683
Fax +82(2)3482.5742

Knight S. Asia
Tel +65.9170.0984
Fax +65.6489.6723