

MX SOLUTION CENTER

Dilution Cabinet System

Knight's newest MX Solution Center is a rugged wall-mounted dispensing system with locks. This superior design allows for simple dispensing, easy servicing, and consumes minimal wall space. Knight understands the cost sensitive nature of the proportioning market, and the important role our dispenser plays in delivering the correct amount of chemical. Knight has designed an elegantly simplistic proportioner that delivers chemical accurately and at an economical price. With a quick turn of the dial, or a simple turn of the key, the MX Solution Center is both easy to use and service.



PROPORTIONING SYSTEMS

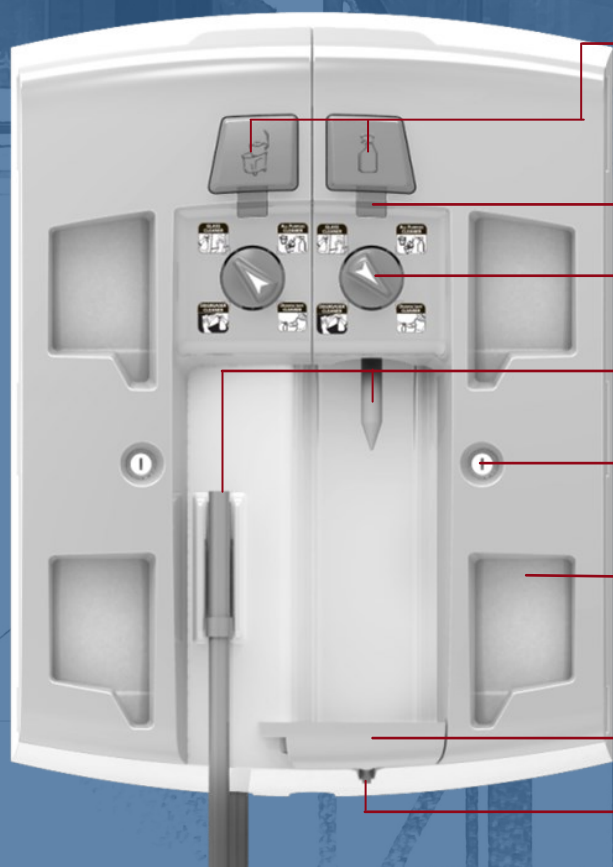


- Economical and cost effective
- Conveniently pre-plumbed
- Dispensers will come fully tubed up
- Tool less cover removal for ease of service
- Rugged material and design for resistance against chemicals and user wear and tear
- 1 and 3.5 GPM flow rates available
- Flex & Aire Gap dilution match
- Over 80,000 cycles at 149° F (65° C)
- Rugged, compact design
- Capable of handling up to 100 PSI (6.9 bar) and 140° F (60° C) temperature

KNIGHT

IDEX

MX Solution Center (Dilution Cabinet System):



Large push button activation with bottle fill & bucket fill icons

Button lock

Product selection dials with pronounced clicking

Bucket fill and bottle fill hose

Individual locking doors

Openings to view chemical labels and low level (3.25"W x 4.5"H)

Drain tube connection

Removable drip tray

⇒ Easy access to engine components for servicing

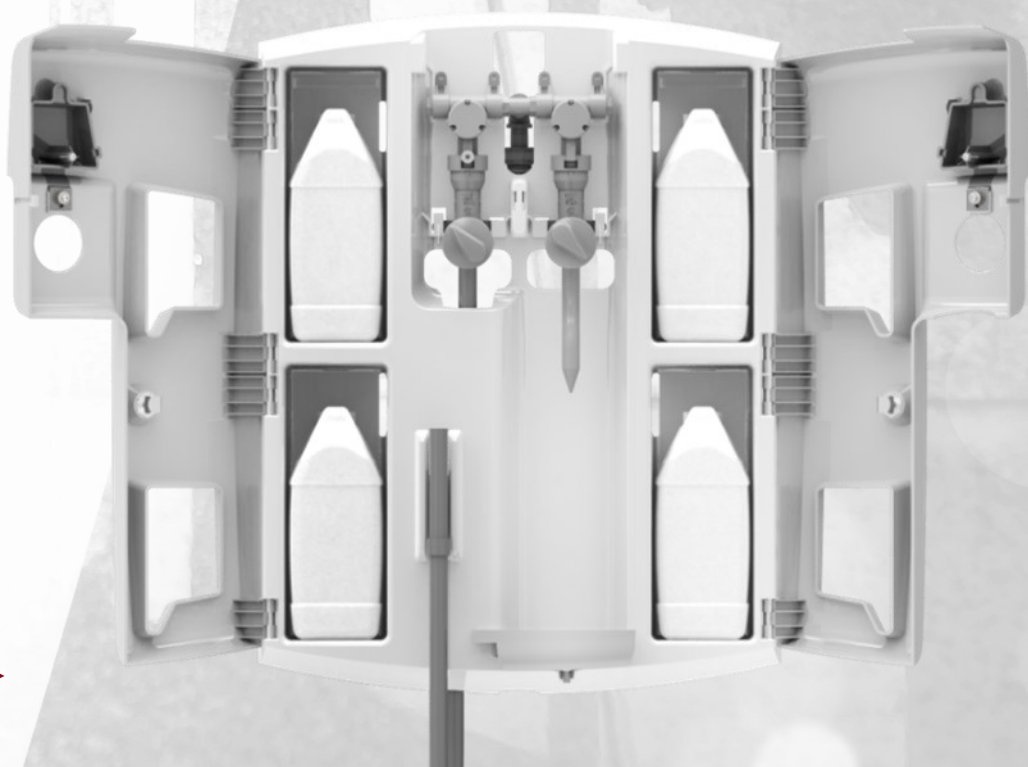
⇒ Buttons attached to the door

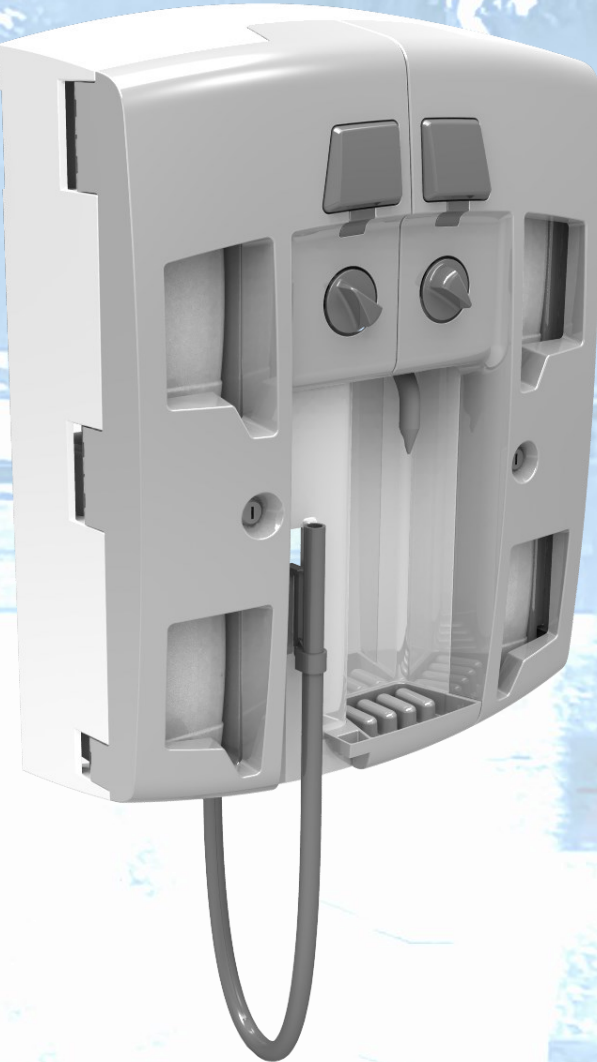
⇒ Dial stays on the engine

⇒ Reinforced hinges

⇒ Chemical storage area for four ½ gallon or 2 liters containers (3.8"W x 10.5"H x 6" D)

⇒ Simple two door design for simplicity & easy access





Serviceability:

The cabinet design is geared towards a service friendly interface. Internal components can be accessed in a few steps, while still keeping the chemical lines connected. This saves 20 to 30 minutes in service time. There is no need to cut or re-connect tubes, or re-priming the chemical lines, which means there is no chemical mess.

Ease of Use:

Knight's MX Solution Center is a simplistic wall-mounted, locking dispensing system that is designed to make proportioning chemical simple and the servicing easy.

How to use

1. Turn dial to chemical to be dispensed
2. Put bottle to the spout or bucket hose to bucket
3. Push button to dispense

Compact and Durable

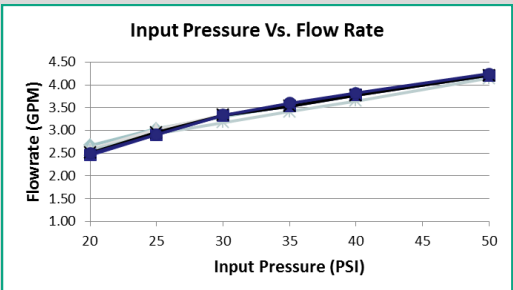
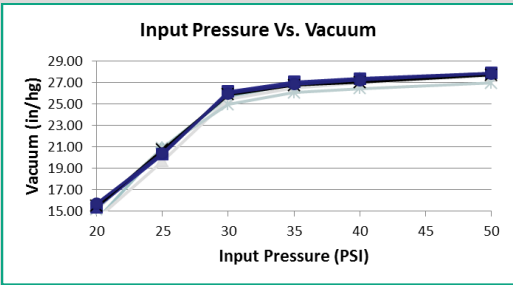
- Small compact design those small closets
- 20.24" (W) x 24" (H) x 7.7" (D)
- ABS and Polypropylene construction for chemical resistance and durability

Safety and Security

- Door lock to prevent pilfering of chemical
- Flex-gap and Aire-gap options to meet local regulatory water requirements

Performance: Up to 70% more accurate

With the water flow regulator, this ensures that if you have higher pressures, you will always have consistent water flow resulting in more accurate chemical dilutions.



FLOW RATE

- Bottle Fill Flow Rate: 1 GPM (3.8 LPM)
- Bucket Fill Flow Rate: 3.5 GPM (13.25 LPM)
- Built in water flow regulator making the unit up to 70% more accurate

BACK FLOW PREVENTER

- Flex-Gap & Aire-Gap back flow preventers options
- Flex-Gap & Aire-Gap dilution ratio chart matches

PRESSURE & TEMPERATURE

- Maximum Pressure: 100 PSI (6.9 bar)
- Minimum Pressure: 20 PSI (1.4 bar)
- Maximum Temperature: 140 °F (60°C) temperature

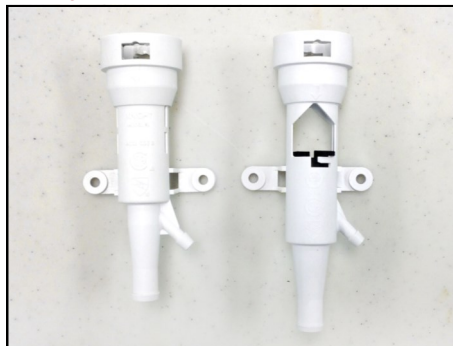


Features and Benefits

The simplistic design is carried onto the tool less snap off cover for easier service and installation. The proportioning engine is designed with less parts that are easy to access, and the built in joggle bracket makes mounting the dispenser as simple as hanging a picture.

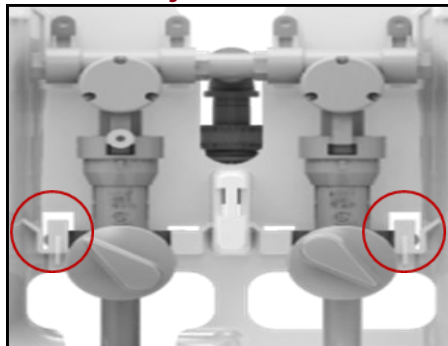


Safety



A.S.S.E listed backflow preventers. Flex and Air Gap backflow preventers protect against cross-contamination

Serviceability



No need to waste time servicing equipment. With a quick press of the tabs, simply dismount the valve assembly for quick service.

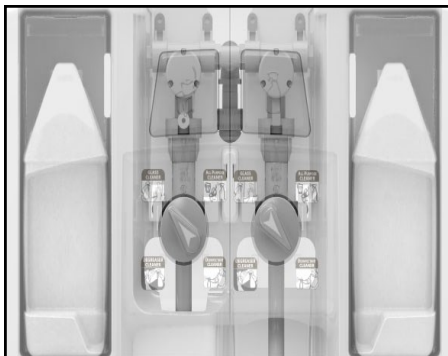


Quality



A cabinet with longevity in mind. ABS material is used to prevent chemical pilfering.

Simplicity



Each cabinet is capable of holding four 1/2 gallon containers.

KNIGHT LIMITED WARRANTY

Knight controls and pump systems are warranted against defects in material and workmanship for a period of ONE YEAR. All Electronic Control Boards have a TWO YEAR warranty. Warranty applies only to the replacement or repair of such parts when returned to the factory with a KRA number, freight prepaid and found to be defective upon factory inspection. Rubber and synthetic rubber parts such as "O" rings, diaphragms, squeeze tubing and gaskets are considered expendable and are not covered under warranty. Warranty does not cover liability resulting from performance of this equipment nor the labor to replace this equipment. Product abuse or misuse voids warranty. Knight products are not for use in potentially explosive environments. Any use of our equipment in such an environment is at the risk of the user. Knight does not accept any liability in such circumstances.

KNIGHT DISCLAIMER

The information and specifications included in this publication were in effect at the time of approval for printing. Knight, LLC. reserves the right, however, to discontinue or change specifications or design at any time without notice and without incurring any obligation whatsoever.

KNIGHT[®]
store.knightequip.com
knightequip.com

Knight U.S.
Toll Free (800) 854-3764
Tel (949) 595-4800
Fax (949) 595-4801

Knight Canada
Tel (905) 542-2333
Fax (905) 542-1536

Knight Europe
Tel +44 (1273) 402780
Fax +44 (1273) 402781

Knight N. Asia
Tel +82 (2) 3481.6683
Fax +82(2) 3482.5742

Knight S. Asia
Tel +65.9170.0984
Fax +65.6489.6723